

Clare Bryant  
Scrutiny Team  
Direct : 020 8379 5003  
or Ext 5003

E-mail: [clare.bryant@enfield.gov.uk](mailto:clare.bryant@enfield.gov.uk)

## **SAFER NEIGHBOURHOOD BOARD**

**Wednesday, 2nd November, 2016 at 7.00 pm in the Conference  
Room, Civic Centre, Silver Street, Enfield, EN1 3XA**

### **Membership:**

(Please see attached list)

### **AGENDA – PART 1**

**1. WELCOME AND INTRODUCTIONS**

**2. APOLOGIES FOR ABSENCE**

**3. CHAIRS FEEDBACK**

**4. MINUTES OF PREVIOUS MEETING** (Pages 1 - 20)

To approve the minutes of the meeting on 21<sup>st</sup> July 2016.

**5. EXAMINATION OF CRIME STATISTICS** (Pages 21 - 26)

Examination of crime statistics received from MOPAC to include:

- (a) Recorded Crime
- (b) Anti-Social Behaviour (ASB)
- (c) Public Confidence & Victim Satisfaction
- (d) Complaints against Borough Officers/Staff
- (e) Stop and Search
- (f) Taser Deployment

**6. INTRODUCTION TO THE ENFIELD BOROUGH COMMANDER**

To formally introduce the members of the Safer Neighbourhood Board to the Enfield Borough Commander, Iain Raphael.

**7. BODY WORN CAMERAS**

To receive a presentation on Body Worn Cameras from Inspector Alun Davies.

**The presentation will be tabled on the night of the meeting.**

**8. NEIGHBOURHOOD CONFIGURATION**

To receive a verbal update on Neighbourhood Configuration from Superintendent Jenny Barnett and Chief Inspector Neighbourhood Policing, Nicki Reynolds, Metropolitan Police Service, Enfield.

**9. INDEPENDENT CUSTODY VISITORS**

To receive a verbal update on Independent Custody Visitors from Superintendent Jenny Barnett and Chief Inspector Neighbourhood Policing, Nicki Reynolds, Metropolitan Police Service, Enfield.

**10. TARGET ESTABLISHMENT**

To receive an update from Chief Inspector, Jenny Barnett.

**11. UPDATE ON CURRENT POLICE OPERATIONS**

To receive an update from Chief Inspector, Jenny Barnett.

**12. UPDATE ON SNB FUNDING APPLICATIONS (Pages 27 - 30)**

To receive an update on SNB funding applications.

**13. ANY OTHER BUSINESS**

**14. DATES OF FUTURE MEETINGS**

To note the date of the next meeting as being 2 February 2017.

### **Members of Safer Neighbourhood Board**

\*SNB Chair – Tim Fellows

CAPE Chairs – (who in addition to their own area of responsibility represent the other CAPEs listed)

\*Alok Agrawal (Southgate Green, Bowes, Palmers Green) – SNB Secretary

\*Glenn Breslin (Bush Hill Park, Winchmore Hill)

\*Pat Jackson (Jubilee, Ponders End)

\*Harry Landsman (Cockfosters, Southgate, Highlands) –SNB Vice-Chair

\*Janet Marshall (Edmonton Green, Upper Edmonton) – SNB Treasurer and Vice-Chair

\*Eddie Fraser (Haselbury, Lower Edmonton)

\*Carol Shuttle (Southbury)

\*Sheila Stacey (Enfield Lock & Turkey Street)

\*Adrian Bishop-Laggett (FERAA)

\*Vicky Dungate (Enfield Racial Equality Council)

\*Jane Richards (MPS Disability Steering Group)

\*Mark Rudling (Business Representative (EBRA))

\*Askin Erozkal (PEP Member) Parent Champion

\*Bobbie Webster and Gideon Obeng (EYP Representatives)

\*Rasheed Sadegh-Zadeh (Independent Advisory Group (IAG))

Ibrahim Dogus (Stop and Search Community Monitoring Group)

Lorna Logan (Independent Custody Visitors Panel (ICV))

Dina Sahmanovic (Victim Support Representative)

Councillors: \*Mary Maguire and Nick Dines

### **Other Interested Parties: -** (including CAPE Chairs who are not SNB Elected Members)

Superintendent Jenny Barnett

Acting Chief Inspector Nicki Reynolds

Lynne Abrams (MOPAC)

Councillor Daniel Anderson (Cabinet Member for Environment)

Councillor Krystle Fonyonga (Cabinet Member for Community Safety & Public Health)

Joanne McCartney (GLA Member)

Peter Waterhouse (Independent Custody Visitors Panel (ICV))

Jon Appleby (Winchmore Hill CAPE)

Janet Bilingsley (Upper Edmonton CAPE)

David Cockle (Highlands CAPE)

David South (Ponders End CAPE)

Colette Cox (Lower Edmonton CAPE)

Revd Ian Gallagher (Enfield Highway CAPE)

Joise Royce (Southgate CAPE)

Irene Wilson (Willow Road Residents)

Gillian Yeung (Bowes CAPE)

Pravin Varsani (Turkey Street CAPE)

Andrea Clemons (Head of Community Safety)

\*=Parties with voting rights. Please note support officers and advisors do not hold voting rights.

This page is intentionally left blank

## **MINUTES OF THE MEETING OF THE SAFER NEIGHBOURHOOD BOARD HELD ON THURSDAY, 21ST JULY, 2016**

### **ATTENDED:**

Tim Fellows (Chair), Alok Agrawal (Southgate Green, Bowes, Palmers Green/Secretary), Harry Landsman (Cockfosters, Southgate, Highlands/ Vice Chair) Janet Marshall (Edmonton Green, Upper Edmonton/Treasurer/ Vice Chair), Pat Jackson (Jubilee, Ponders End), Eddie Fraser (Haselbury, Lower Edmonton), Carol Shuttle (Southbury), Sheila Stacey (Enfield Lock & Turkey Street), Adrian Bishop-Laggett (FERAA), Lorna Logan (Independent Custody Visitors Panel (ICV), Councillor Mary Maguire, Councillor Nick Dines, Tony Molloy (SNT Inspector), Carl Robinson (Chief Inspector), Clare Bryant (Scrutiny Officer)

### **APOLOGIES:**

Bradley Few (MOPAC), Patricia Jackson (Jubilee, Ponders End), Askin Erozkal (PEP Member) and Vicky Dungate (Enfield Racial Equality Council)

### **24. WELCOME AND INTRODUCTIONS**

All the attendees were welcomed to the meeting.

The Chair explained that Item 6 (Body Worn Cameras) would be deferred to the next meeting and that a presentation on Hate Crime would be given instead.

### **25. APOLOGIES FOR ABSENCE**

Apologies for absence were received from Bradley Few (MOPAC), Patricia Jackson (Jubilee CAPE), Askin Erozkal (PEP Member) Parent Champion and Vicky Dungate (Enfield Racial Equality Council).

### **26. CHAIR'S FEEDBACK**

The Executive Committee had not had the opportunity to meet since the last meeting of the Safer Neighbourhood Board.

A revised map of the ward restructuring was circulated to members after the meeting and is attached to the minutes.

Tim attended a conference at New Scotland Yard of the challenge of policing Faith and LGBT communities in London. No real solutions were found but it brought to light the fine line Police have to tread.

Sheila Stacey informed attendees that she is creating an up to date list of all CAPE Chairs in the borough. She requested that CAPE Chairs who do not have an email address nominate someone to receive email updates on their behalf.

**SAFER NEIGHBOURHOOD BOARD - 21.7.2016**

**27. MINUTES OF THE PREVIOUS MEETING**

A correction was made on Item 18. The correct target strength for police officers is 544.

The minutes of the previous meeting were approved.

**28. EXAMINATION OF CRIME STATISTICS**

Superintendent, Carl Robison and SNT Inspector, Tony Molloy provided an update on the current police operations.

From 2012 to 2016 the Police have been focusing on the MOPAC 7 Challenge to reduce 7 neighbourhood crimes 20% across all London boroughs. The MOPAC 7 is as follows:

- Burglary
- Criminal Damage
- Robbery
- Theft from a motor vehicle
- Theft from a person
- Theft of a motor vehicle
- Violence with Injury

Overall, Enfield achieved a 16% reduction of crime during the MOPAC 7 Challenge.

There is a focus on child sexual exploitation with 2 dedicated officers working in the borough. Figures show an increase in these kinds of crimes in the borough. This is believed to be because more people feel confident in reporting the crimes, not that more crimes of this nature are taking place.

Domestic abuse is always a priority for the police. An officers role can be time consuming in domestic violence incidents as it involves victim support, collecting evidence and attending court.

Approximately, there will be 45/50 people missing in Enfield at any one time. These cases are ranked by: high risk, medium risk and low risk. The amount of time an officer spends on the case is dependant of the risk.

Theft from person has seen an increased in the borough. Elderly people in super markets are being targeted. The police are working closely with supermarkets in the borough to raise awareness to increase prevention.

Public confidence in the police is at 57%. Police processes and procedures are good. Officers are participating in more community engagement. The police website is being re-designed and there is a digital lead who is aiming to improve the electronic options to report crimes online.

Carl is currently the professional standards champion that reviews all complaints made against the police in Enfield.

**SAFER NEIGHBOURHOOD BOARD - 21.7.2016**

All officers receive training on Stop and Search to ensure they are equipped to deal with the situation and understand fully their powers. There has been an increased intelligence based approach to Stop and Search.

There are a minimum of four officers who are trained in using a taser on duty per shift. Not all officers are trained to use a taser as it can be expensive and extensive to keep all officers training up to date. The taser is mostly used as a deterrent and is only used as a last resort. Officers work in pairs when they have the taser to ensure they are safe and the taser is being used correctly.

The following questions were taken:

Q) The Mayor of London suggested that each ward will gain an extra police officer, is this true?

A) The Commissioner, Sir Bernard Hogan-Howe, and the Mayor of London, Sadiq Khan, have agreed to introduce a second dedicated ward officer (DWO) in every London ward by the end of 2017.

We will move 260 officers into these roles by the end of this year, and all 629 wards will have two of these dedicated ward officers by the end of 2017.

This is an increase of over 500 dedicated ward officers who are named, dedicated and ring-fenced officers at ward level, with a sole focus on responding to the issues that matter to that local community.

In Enfield, 54 Police Now Graduate Officers will be joining the team. These officers have a 2 year commitment to the borough and will be in Southgate, Highlands and Chase wards amongst others.

Q) Why was Highlands ward picked as one of the wards to receive an extra police officer?

A) Due to the higher number of mental health access points in this ward such as Chase Farm.

Q) Has burglary to business gone down?

A) A number of bookmakers in the borough have been burgled and a number of arrests have been made. Betwatch was created to encourage other bookmakers to share their best practise and raise any concerns they made have. There has been a 24% reduction overall in burglaries compared to the baseline data.

Q) Has there been an increase in ASB due to the nights staying lighter longer?

A) Across London, there has been a high police presence in place to stop and reduce ASB. Many officers are working twilight shifts (12 hours) to deal with the demand over the summer period.

Q) Has there been an increase in hate crime?

A) Hate crime is defined as a crime motivated by racial, sexual or other prejudice, typically one involving violence. Since the decision was made to

## **SAFER NEIGHBOURHOOD BOARD - 21.7.2016**

leave the European Union the reporting of hate crime has increased. Different communities have been affected differently by the decision.

Q) Will body worn cameras help the police?

A) Body worn cameras are welcomed by the police. In the new year, all front line officers will have a body worn camera. It is hoped this will reduce complaints and increase confidence from both officers and members of the public.

Concerns were raised that the Stop and Search Monitoring Group had one meeting and then those that attended never received any feedback as Stop and Search is meant to feedback into the SNB. Stop and Search is a useful tool when used wisely, however, it can alienate young people when they are routinely stopped.

### **29. HATE CRIME**

The planned item on Body Worn Cameras was deferred until the next meeting due to changes in police roles.

Instead, the chair gave a presentation on Hate Crime which is attached to this set of minutes.

The Chair explained that hate crime is where a person or a group is victimised because of the offender's hatred of the victims:

- Race/Ethnicity
- Sexual Orientation/Sexual Identity
- Disability
- Faith/Belief

There has been no major increase or decrease in hate crime in Enfield. The Hate Crime Executive and the Case Management Panel review and monitor all reported cases of hate crime.

There are 5 third party reporting locations across the borough these are:

- Enfield LGBT Network
- Enfield Disability Action
- Enfield Racial Equality Council
- One to One Enfield
- Enfield Citizens Advice Bureau

An app is being created which would allow victims to report hate crimes on their phone is being promoted.

Hate crimes on social media and mobile phones are difficult to investigate as the providers should be taking responsibility. The police only get involved with high priority cases when the information provider needs support.

All hate crimes should be reported to 101. Victims should report the situations as soon as they happen.



**SAFER NEIGHBOURHOOD BOARD - 21.7.2016**

**30. TARGET ESTABLISHMENT**

The current target strength for police officers is 555.  
The current actual number is 523.

The 5 crime management officers who used to work specifically for Enfield are now part of a central unit. 16 new officers will be part funded by Enfield Council and the police. They will still be police officers but they will have joint tasking depending on the need of the local authority. 10 of these officers will work on estates and 6 will focus on problem solving.

**31. UPDATE ON CURRENT POLICE OPERATIONS**

Superintendent, Carl Robinson, provided an update on current police operations.

Public Order Events – this will last for one week around the schools in the boroughs end of term. Locations which have previously been an issue have got dispersal zones in place

The suspect who stole a car containing two children has been tracked down, charged and sent to court. He has been charged with child abduction.

From 1<sup>st</sup> August 2016 to 4<sup>th</sup> September 2016, the Custody office at Edmonton will be suspended and all staff will be based at Wood Green. No decision has been made about whether the Edmonton custody office will close permanently. The board expressed concerns they had about how long police officers would spend out of borough to travelling to the station which is further away from Enfield.

The Board requested to be kept informed of the future plans for Edmonton Custody Suite.

**32. UPDATE ON SNB FUNDING APPLICATIONS**

Information was provided on the successful bids from last year's funding.

One bid out of three was accepted by MOPAC this year.

The Chair will be writing to MOPAC to explain that there are concerns that the bids the SNB felt were relevant to the borough were rejected.

**33. ANY OTHER BUSINESS**

The following questions and comments were raised during any other business:

- Territorial Support Group (TSG) is not called to Enfield often. The TSG are there to deal with public disorder and are taser trained. Other

**SAFER NEIGHBOURHOOD BOARD - 21.7.2016**

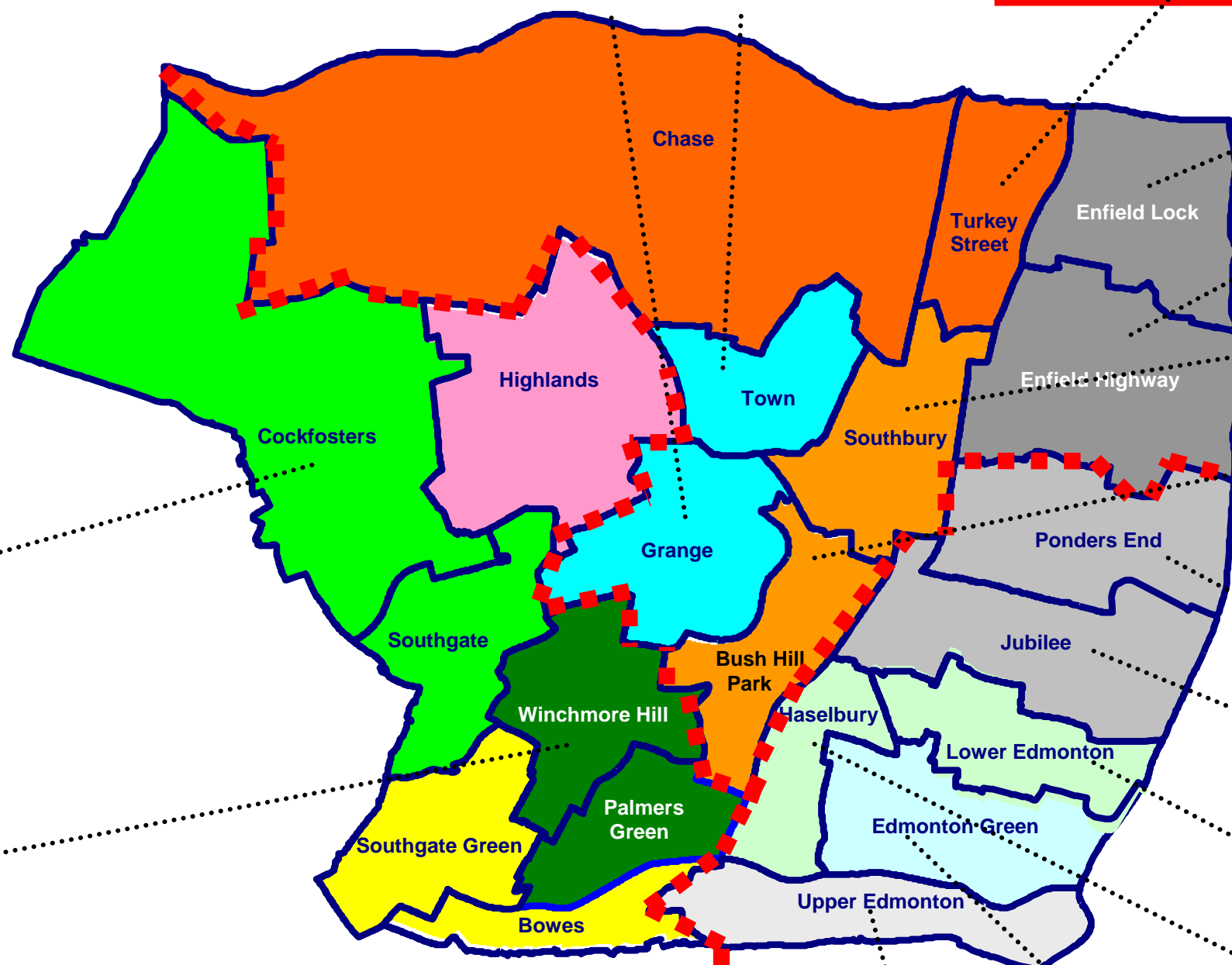
London boroughs such as Hackney and Tower Hamlets have a greater need for their support at the present time. The TSG are sent to places with the highest risk. London Boroughs can bid to have the TSG on a daily basis.

- Speeding on the A10 is an on-going issue. New ways to deter people from speeding are being looked into. An increasing number of people are being charged with driving recklessly along this road.
- The police were thanked for the way they handled a fight between Oasis School students. It was said the way the police dealt with the situation helped them gain the students respect.
- Currently, 24 bikes in the borough for the police to use. These bikes are in the process of getting serviced and training is being provided to officers. Over the next 2 months it is hoped to see more police on bikes.
- Many Wards now have a new police Sergeant. Ward CAPE's will not be forced to merge, although if they want to they have the option too.
- On Friday 12 August there will be an open day at Edmonton Police Station. All Met resources will be there to show what they can do and their skills sets. The open day will start at 10am and finish at 4pm.

**34. DATES OF FUTURE MEETINGS**

To note the date of future meetings of the SNB being held at the civic centre:

- Wednesday 2 November 2016, 7pm
- Thursday 5 February 2016, 7pm
- Wednesday 5 April 2016, 7pm



**PS Velda EWEN 17YE**  
Turkey Street - Cris local ID YE19  
DWO PC Adam ASPINALL 330YE  
DWO PCSO Mo NASEER 7237YE  
Chase - Cris local ID YE03  
DWO PC Andrew CALVER 453YE  
DWO PCSO Tina RILEY 7176YE

**Enfield  
Police  
Station**

**APS ALDWINKLE 474YE**  
Enfield Lock - Cris local ID YE07  
DWO PC Emma CLAUSON 463YE  
DWO PCSO Brian McLAUGHLIN 7299YE  
  
Enfield Highway - Cris local ID YE06  
DWO - PC James FLESHER 337YE  
DWO - Pc Smantha MELTON 450YE  
DWO PCSO Mark TILLEY 7194YE

**PS Stuart GILL 82YE**  
Southbury - Cris local ID YE15  
DWO PC Lee PIDDINGTON 537YE  
DWO PCSO Edward WHEATLEY 7133YE  
  
Bush Hill Park - Cris local ID YE02  
DWO PC Dave CAWLEY 815YE

**Ps Barrie BEYLER 13YE**  
Ponders End - Cris local ID YE14  
DWO PC Samuel LOWE 343YE  
DWO PCSO Stacie HARDIE 7262YE  
  
Jubilee - Cris local ID YE11  
DWO PC Olivia PORTLOCK 619YE  
DWO PCSO Steve HURL 7264YE

**PS Deebie KNEEBONE 86YE**  
Lower Edmonton - Cris local ID YE12  
DWO PC Sharon COGLEY 109YE  
DWO PCSO Jess WILLIAMSON 7181YE  
  
Haselbury - Cris local ID YE09  
DWO PC Kylie RICHARDSON 459YE  
PCSO Tom GALLAGHER 7130YE

**PS Dave DURRANT 9YE**  
Edmonton Green - Cris local ID YE05  
DWO PC Stuart GAVIN 548YE  
DWO Pc Edward HORLEY 339YE  
DWO PCSO Danielle ALLEN 7109YE

**Edmonton  
Police  
station**

**PS Ian DAVEY 46YE**  
Upper Edmonton - Cris local ID YE20  
DWO PC Leigh WALLER 568YE  
DWO PC Alex FROUD 338YE  
DWO PCSO Kevin TURNER 7103YE

**PS Tony Long 70YE**  
Southgate Green - Cris local ID YE17  
DWO PC Darren RADFORD  
DWO PCSO Sab HASSAN 7195YE  
  
Bowes - Cris local ID YE01  
DWO PC Paul CROWNSHAW 202YE  
DWO PCSO David O'NEIL 7242YE

**Southgate  
Police  
Station**

**PS Tom LAZAROU 2YE**  
MH Liason Officer  
  
Highlands - CRIS local ID YE10  
DWO PC Michelle CARTY 494YE  
DWO PCSO Lisa SIMPSON 7145YE

**APS Alan SETH 346YE**  
Cockfosters - Cris local ID YE04  
DWO PC Lee JEFFREY 507YE  
DWO PCSO Steven DOUGLAS 7231YE  
  
Southgate - Cris local ID YE16  
DWO PC Nick ELLICOTT 175YE  
DWO PCSO Andy SRAUGHN 7140YE

**APS Hassan SHAH 312YE**  
Winchmore Hill Cris local ID YE21  
DWO PC Denise THORPE 625YE  
DWO PCSO Anthony RIVAS 7198YE  
  
Palmers Green - Cris local ID YE13  
DWO PC Kath JOHNSON 458YE  
PCSO Jenny ARKWRIGHT 7104YE

This page is intentionally left blank

# Importance of Reporting Hate Crime



**ENFIELD HATE CRIME FORUM**

# Hate Crime

Hate crime is where a person or a group of people are victimised because of the offender's hatred of the victim's,

- Race / Ethnicity
- Sexual Orientation / Sexual Identity
- Disability
- Faith / Belief



**ENFIELD HATE CRIME FORUM**

# Types of Hate Crime

## Some types of Hate Crime:

- Verbal abuse and harassment
- Threats and intimidation
- Physical assault and violence
- Sexual violence
- Psychological and emotional violence
- Damage to property



**ENFIELD HATE CRIME FORUM**

# Enfield Hate Crime Forum

- The Enfield Hate Crime Forum (EHCF) is a multi agency group that brings together various organisations in the borough to effectively tackle various strands of hate crime such as racial harassment, homophobia, disability discrimination and faith discrimination.
- It brings together the work of the London Borough of Enfield, Metropolitan Police, the Racial Incident Action Group (RIAG), Enfield Lesbian Gay Bisexual and Transgender Network, Enfield faith forum, Enfield Racial Equality Council, Enfield Disability Action, Victim Support Enfield and various voluntary and community organisations to bring good working practices to all member agencies.



**ENFIELD HATE CRIME FORUM**



# Latest Hate Crime Data

ENFIELD	Hate Crime by type							
	Transgender	Racist	Racist and Religious	Islamophobic	Homophobic	Faith	Anti-Semitic	Disability
Previous 2 weeks (09/06 to 22/06)	0	19	20	1	3	5	4	2
Current 2 weeks (23/06 to 06/07)	0	15	15	0	0	1	1	0
% change	n/a	-21.05%	-25.00%	-100.00%	-100.00%	-80.00%	-75.00%	100.00%

A	D	E	F	G	H	I	J
ENFIELD	Hate Crime by type						
Period	Racist and Religious	Homophobic	Disability	Faith	Islamophobic	Racist	Anti-Semitic
2016 so far (01/01 to 25/06)	160	15	10	29	12	144	9
2015 so far (01/01 to 25/06)	140	11	0	11	3	137	4
% change 2015 to 2016	14.3%	36.4%	n/a	163.6%	300.0%	5.1%	125.0%



**ENFIELD HATE CRIME FORUM**

# Latest Hate Crime Data

	Hate Crime Figures London		
	12 months to May		
	2015	2016	Change
Racist & Religious	12,864	14,540	+13.0%
Homophobic	1,648	1,882	+14.2%
Ant-Semitic	501	450	-10.2%
Islamaphobic	786	1,202	+52.9%



**ENFIELD HATE CRIME FORUM**

## How to report incidents

**Police on 101** In an emergency call 999

Enfield Council on 020 8379 4612

Or at any of the 3<sup>rd</sup> party reporting sites



**ENFIELD HATE CRIME FORUM**

## 3<sup>rd</sup> Party Reporting sites

- Enfield LGBT Network
- Enfield Disability Action
- Enfield Racial Equality Council
- One to One Enfield
- Enfield Citizens Advice Bureau



**ENFIELD HATE CRIME FORUM**

## Why report incidents?

By reporting incidents the service providers will be able to understand the problems better and we will be able to direct services where they are needed

All hate crime incidents will be taken seriously, always report incidents regardless of how small or big you access the situation to be.



**ENFIELD HATE CRIME FORUM**

# Tackling Hate Crime

All reported hate crime incidents in Enfield are supported by the monthly Casework Management Panel. Cases that are deemed priority will be discussed with partners to ensure a multi agency response is provided

The Enfield Hate Crime Forum meets 3 times a year and members of the public are welcome to attend. Details of the date and venue will be published before the event.



**ENFIELD HATE CRIME FORUM**

# Tackling Hate Crime in Enfield

The Enfield Hate Crime Forum is committed to bringing perpetrators of Hate Crime to justice and to offer suitable support to victims of hate crime.

Help us by reporting hate crimes



**ENFIELD HATE CRIME FORUM**

This page is intentionally left blank



**SAFER NEIGHBOURHOOD DASHBOARD - NAVIGATIONAL PAGE**

**Click here to access the Crime and ASB Dashboard** ►

This dashboard gives us a mapped borough breakdown of all the relevant TNO crime types and ASB incidents. The dashboard also gives us trends and compares the most recent 12 months against the previous 12 month period.

**Click here to access Borough Comparison Dashboard** ►

This dashboard allows users to compare the most recent % change in offences on their borough to other boroughs located within the MPS, as well as the MPS as a whole.

**Click here to access Confidence & Satisfaction Dashboard** ►

This dashboard allows users to compare overall confidence and satisfaction levels at a borough level, enabling the user to view trends and changes over time.

**Click here to access the Police Complaints Dashboard** ►

This dashboard gives us a borough breakdown of police complaints, breaking down both complaint types as trends well as trends and comparison of recorded complaints.

**Click here to access the the MOPAC Intrusive Tactics dashboard** ►

This dashboard gives us an MPS and borough overview of Stop and Search performance and should be used to scrutinised your boroughs use of stop and search as a tactic.

**Click here to access the Safer Neighbourhood Dashboard Glossary** ►

The SNB dashboard glossary gives you definitions and explanation of the various crime, confidence, satisfaction and complaint types referenced within the dashboard.

## CRIME AND ASB DASHBOARD

MAYOR OF LONDON

OFFICE FOR POLICING AND CRIME

## Choose Borough

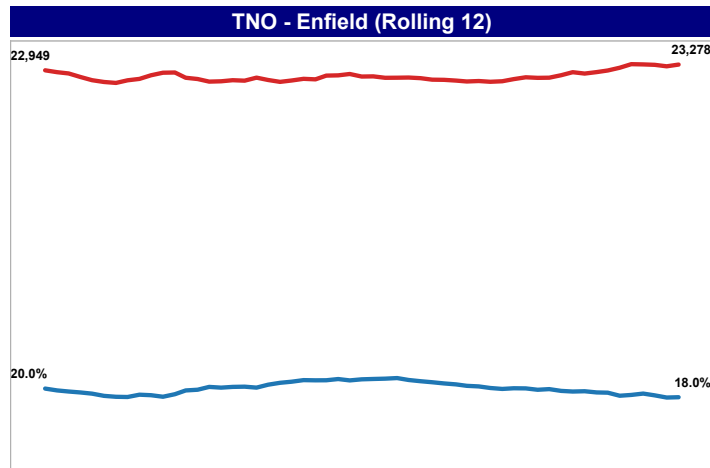
Enfield

## Choose Crime Type

TNO

*Note: Hate crimes are offences which are flagged as having a hate element when recorded by police. A crime can have more than one hate flag attached to it. For example, an assault could have both a homophobic and disability element. This crime would be included in the homophobic offence count as well as in the disability offence count. Therefore, adding up all the hate crime categories may result in multiple counting of a single offence.*

*\* Indicates crime types making up the MOPAC 7 total*



☐ Monthly  
☒ Rolling 12

■ Rolling 12 month offences  
■ Sanction Detection Rates %

Enfield - TNO	
Sep 16	23,278
Aug 16	23,178
Jul 16	23,263
Jun 16	23,287
May 16	23,301
Apr 16	23,096
Mar 16	22,939
Feb 16	22,846
Jan 16	22,762
Dec 15	22,841
Nov 15	22,668
Oct 15	22,526

## Rolling 12 % Change - Enfield

ASB	14.2% (1,105)
Burglary in Other Buildings	-18.6% (-137)
Burglary in a Dwelling	1.1% (22)
Disability Hate Crime	300.0% (9)
Domestic Abuse Hate Crime	5.5% (152)
Faith Hate Crime	115.4% (30)
Gun Crime	-1.2% (-1)
Homophobic Hate Crime	47.8% (11)
Knife Crime	-11.4% (-54)
Knife Crime With Injury	2.7% (3)
MOPAC 7	-1.7% (-196)
Racist and Religious	23.1% (68)
Rape	19.7% (34)
TNO	3.4% (761)
Theft Person*	16.8% (77)
Theft Taking of MV*	11.2% (71)
Theft from MV*	-9.0% (-189)
Total Burglary*	-4.1% (-115)
Total Criminal Damage*	-1.6% (-34)
Total Robbery*	-2.0% (-18)
Total Sexual Offences	16.8% (79)
Transgender Hate	33.3% (1)
VWI*	0.5% (12)
Violence Against the Person	11.7% (781)
Youth Violence	5.4% (35)

[Click here to return to the Navigational Page](#)



## BOROUGH COMPARISON DASHBOARD

MAYOR OF LONDON  
OFFICE FOR POLICING AND CRIME

### Select Boroughs (Select no more than 4)

Multiple values

### Selected Boroughs

■ Enfield
 ■ Waltham Forest
 ■ Haringey

Selected Borough % Change			Selected Borough % Change		
Burglary in Other Buildings	-18.6% (-137) -14.8% (-106) -31.2% (-258)	<div><div></div><div></div><div></div></div>	TNO	3.4% (761) 11.7% (2,908) 2.9% (613)	<div><div></div><div></div><div></div></div>
Burglary in a Dwelling	1.1% (22) -4.9% (-94) 0.4% (5)	<div><div></div><div></div><div></div></div>	Theft Person*	16.8% (77) 51.1% (601) 15.9% (89)	<div><div></div><div></div><div></div></div>
Disability Hate Crime	300.0% (9) 13.3% (2) 325.0% (13)	<div><div></div><div></div><div></div></div>	Theft Taking of MV*	11.2% (71) 14.3% (112) -5.5% (-40)	<div><div></div><div></div><div></div></div>
Domestic Abuse Hate Crime	5.5% (152) 18.8% (467) 19.9% (468)	<div><div></div><div></div><div></div></div>	Theft from MV*	-9.0% (-189) -0.2% (-4) -6.1% (-98)	<div><div></div><div></div><div></div></div>
Faith Hate Crime	115.4% (30) 102.1% (49) 47.2% (25)	<div><div></div><div></div><div></div></div>	Total Burglary*	-4.1% (-115) -7.6% (-200) -11.4% (-253)	<div><div></div><div></div><div></div></div>
Gun Crime	-1.2% (-1) 27.5% (25) 13.0% (10)	<div><div></div><div></div><div></div></div>	Total Criminal Damage*	-1.6% (-34) 5.1% (110) 11.3% (207)	<div><div></div><div></div><div></div></div>
Homophobic Hate Crime	47.8% (11) 37.7% (20) 14.3% (6)	<div><div></div><div></div><div></div></div>	Total Robbery*	-2.0% (-18) -0.3% (-4) -16.1% (-112)	<div><div></div><div></div><div></div></div>
Knife Crime	-11.4% (-54) 3.2% (18) -9.4% (-32)	<div><div></div><div></div><div></div></div>	Total Sexual Offences	16.8% (79) 7.5% (42) 4.8% (23)	<div><div></div><div></div><div></div></div>
Knife Crime With Injury	2.7% (3) 8.3% (15) -15.9% (-23)	<div><div></div><div></div><div></div></div>	Transgender Hate	33.3% (1) 40.0% (2) 50.0% (2)	<div><div></div><div></div><div></div></div>
MOPAC 7	-1.7% (-196) 6.9% (866) -1.2% (-117)	<div><div></div><div></div><div></div></div>	VWI*	0.5% (12) 9.3% (251) 3.7% (90)	<div><div></div><div></div><div></div></div>
Racist and Religious	23.1% (68) 51.5% (212) 7.2% (30)	<div><div></div><div></div><div></div></div>	Violence Against the Person	11.7% (781) 19.1% (1,386) 13.7% (905)	<div><div></div><div></div><div></div></div>
Rape	19.7% (34) 7.7% (15) 5.8% (9)	<div><div></div><div></div><div></div></div>	Youth Violence	5.4% (35) 13.1% (79) 3.8% (21)	<div><div></div><div></div><div></div></div>

Click here to return to the Navigational Page 

## CONFIDENCE AND SATISFACTION DASHBOARD

MAYOR OF LONDON  
OFFICE FOR POLICING AND CRIME

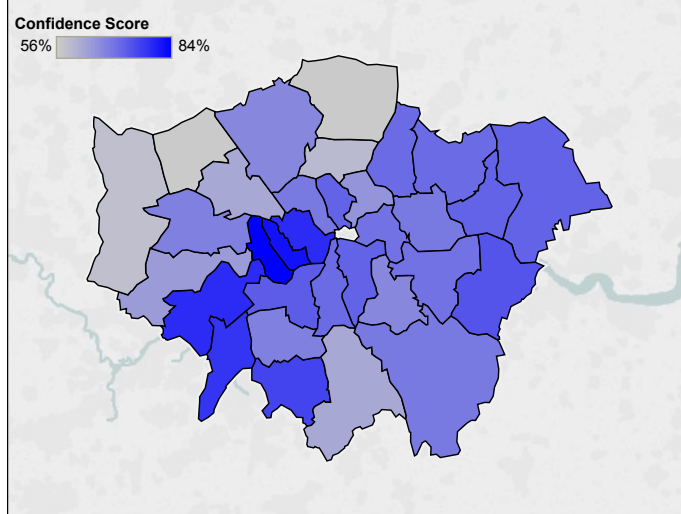
## Choose Borough

Enfield

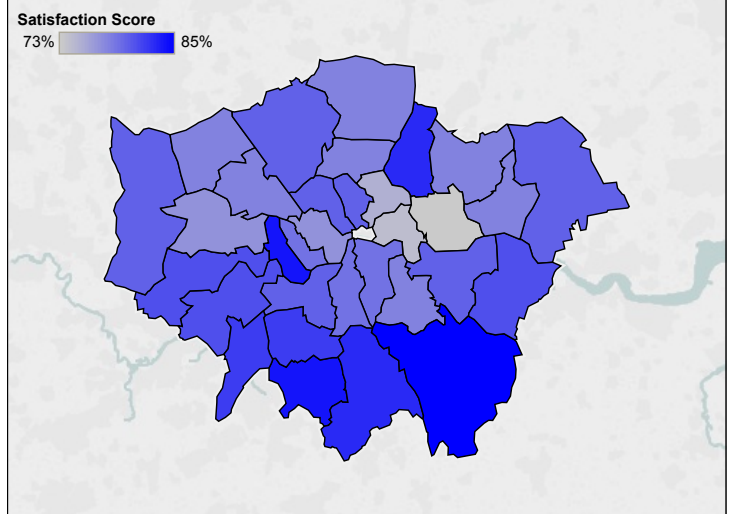
## Choose Period

Jun 16

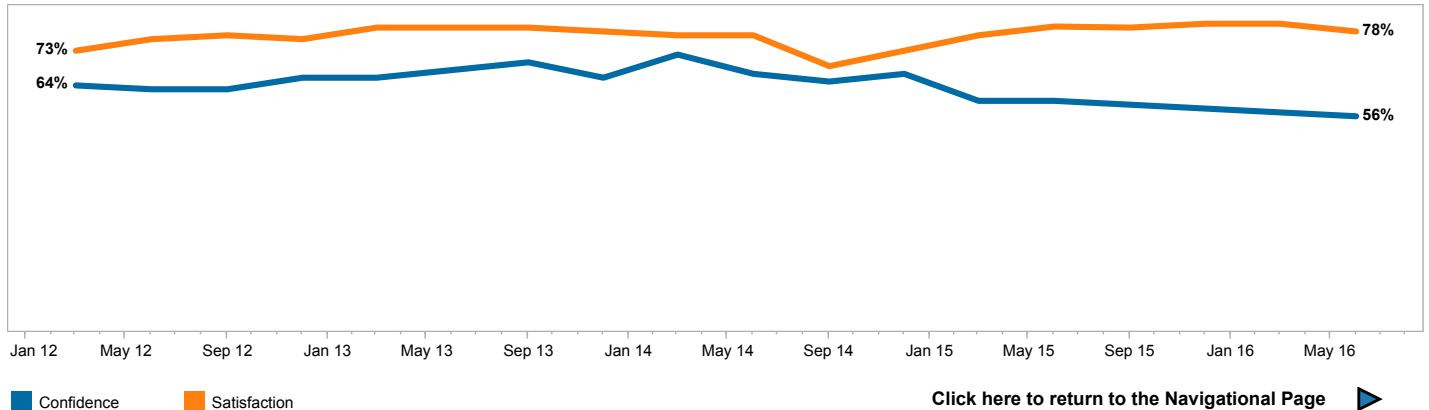
Borough Confidence Map



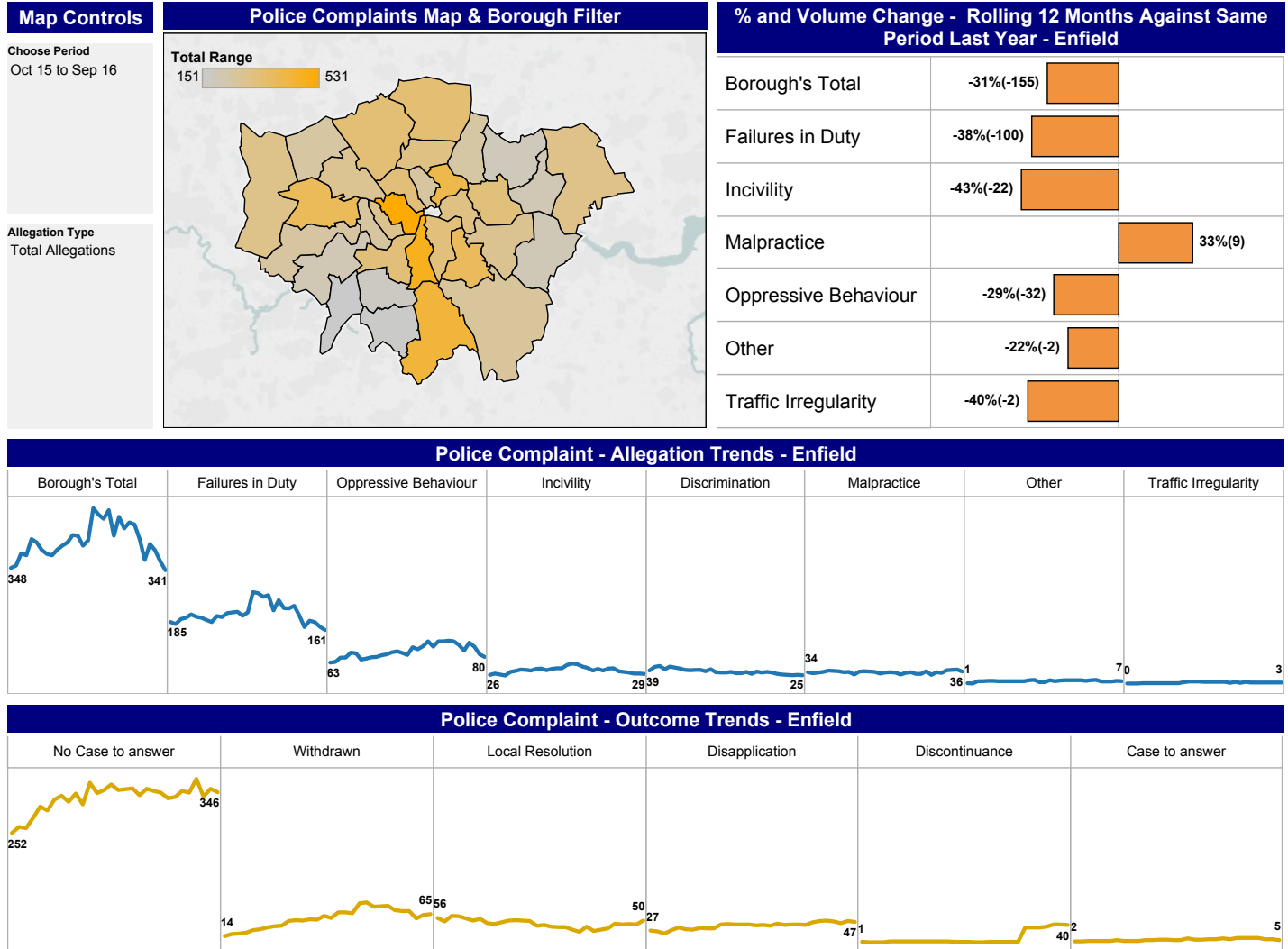
Borough Satisfaction Map



Confidence and Satisfaction Trends



## PUBLIC COMPLAINTS DASHBOARD

MAYOR OF LONDON  
OFFICE FOR POLICING AND CRIMEChoose Borough  
Enfield
[Click here to return to the Navigational Page](#)

"Allegations are an interpretation of officer/staff behaviour at the incident. Officer/staff allegation measure counts the total allegations against each officer/staff involved (for example one complainant could make one allegation involving two different officers. This would be counted as two officer allegations)"

This page is intentionally left blank

## SAFER NEIGHBOURHOODS BOARD FUND PROJECT UPDATES

Project Name	Funding Bid Submitted?	Funding Applied For (£)	Approved	Outcomes Agreed	Update on Delivery of Outcomes and Further Planning	Expenditure to Date (£)
Visits to Ben Kinsella Exhibition	January 2015	5,000	22/1/2015	<ul style="list-style-type: none"> <li>500 visitors to the Ben Kinsella Exhibition to learn about the consequences of carrying a knife / knife crime and how to stay safe. This will be young people accompanied by appropriate numbers of school teachers and parents.</li> </ul>	<p>3 trips involving 105 individuals have taken place on the 8/6/15, the 2/11/15 and the 19/2/15, with very positive feedback received from these sessions.</p> <p>Discussions are currently in place with the Pupil Referral Unit to arrange a visit</p>	£2,176.40
LYRC Crises action Team	June 2015	20,000	3/7/2015	<ul style="list-style-type: none"> <li>This project will prevent crime. The CAT will engage directly with 9 young people over 3 months at a minimum of 30hrs for those at risk of gang affiliation or specifically involved at various levels of gun, drugs, knife and gang lifestyles, offering personal support and counselling to assist them in choosing positive life options. After 3 months the young people will know they have a trusted team of people they can turn to and this will be monitored by the level of calls we receive.</li> <li>Building on increased confidence and trust, they will train those who have been transformed into becoming peer mentors for the project over 12 months. If they engage with 36 young people over the year (see 1 above), 10% will go on to</li> </ul>	<p>LYRC are working with Enfield Grammar to identify young people deemed as most at risk. This is based on school intelligence of boys who either have siblings in gangs or are displaying behaviour patterns of concern.</p> <p>The agreed process is that the school identify 16 at risk teenagers and send letters to parents to ask for their support, a meeting and to introduce initiative to the selected children.</p> <p>LYRC are currently awaiting</p>	£6,000

				<p>become the CAT youth wing, (target going into 2016 will be to produce 3 CAT peer mentors by end of 2015)</p> <ul style="list-style-type: none"> <li>• The CAT plan to end 2016 with 18 CAT peer mentors, as each CAT peer mentor is focussed also with attracting 2 members to join the team over 12 months.</li> <li>• The CAT peer mentors will then go on work with young people at risk themselves to provide support and advice and to help divert them from criminal activity. LYRC will help with CV construction and work with local employers in achieving positive outcomes</li> </ul>	<p>confirmation of starting date although all CAT contributors and mentors have been briefed and undertaken an initial training programme. The school have allowed full use of their facilities and LYRC also have a film company who will be offering acting and vocal training to participants Queens Park Rangers FC have agreed to fully support the programme, offering incentives to all CAT members, including tickets to games, engaging with first team players, coaching facilities and more. LYRC will not be drawing down any further funding until the CAT initiative is fully operational.</p>	
EIYCT & Oasis Hub Enfield Youth Outreach	December 15	£20,700	17/12/15		<ol style="list-style-type: none"> <li>1. During Qtr.1 we have engaged with 20 young people during the outreach sessions, and encouraged them to attend youth drop in sessions. Detached sessions so far have covered Albany Park, Turkey Street, Ordnance Road and Enfield Island Village</li> <li>2. During Q1 we have mentored 9 young people on</li> </ol>	£5,000



					<p>a 1-1 basis. Who have been encouraged to positively engage with other youth provisions. We are seeing some show signs of improvement in school. From this group 1 has started volunteering with us. 1 has been identified for further support.</p> <p>3. We are currently identifying young people that would be suitable for the Ben Kinsella exhibition and would be looking to take them towards the end of Qtr. 3 or beginning of Qtr. 4</p> <p>4. In Qtr. 1 we have taken 8 young people to Brixton prison as part of the Keep Out scheme. This took place on May 24<sup>th</sup> 2016. Further work will be undertaken with these young people throughout the year with some being offered 1-1.</p> <p>5. For Qtr. 1 we have had 4 young people volunteer with other provisions that we run. These young people are at risk of criminal activity or joining a gang. They are being mentored as part of our volunteering programme and are being challenged on negative behaviours. They</p>	
--	--	--	--	--	--	--

					are also growing in confidence and developing transferable skills that they can use later on in life.	
St Giles SOS+LIVE	31/5/2016	£4,000	17/6/2016	<ul style="list-style-type: none"> <li>• To explore the young peoples' attitudes to knife crime and to link this with the fear of crime, territoriality and gangs</li> <li>• To understand that carrying a knife decreases your actual protection but increases your perceived protection</li> <li>• Feedback forms are completed by pupils and staff for each session. These forms relate to increased understanding and knowledge as well as changes in attitude and thinking</li> <li>• We will monitor the number of sessions delivered; the SNB will monitor this and will be able to request feedback from the head teachers or school SEN leads in addition to feedback reports on the sessions.</li> </ul>		